

## 2024 Harvest: Corn

Field: Bratens

Hovland Farms | Hovland

Start: Oct 23, 2024 4:38 PM

End: Oct 26, 2024 10:59 AM



### Work Totals

Area Harvested: 136.9 ac

Total Yield: 24,399 bu

Wet Weight: 9,983.8 lb/ac

Elevation: 1,070 ft

Yield: 178 bu/ac

Moisture: 14 %

Total Wet Weight: 1,366,344 lb

### Performance

Harvest Time: 10 hr 32 min

Productivity: 13 ac/hr

Throughput (Dry): 2,302 bu/hr

Fuel Efficiency: 128.8 bu/gal

Fuel Rate (Time): 17.9 gal/hr

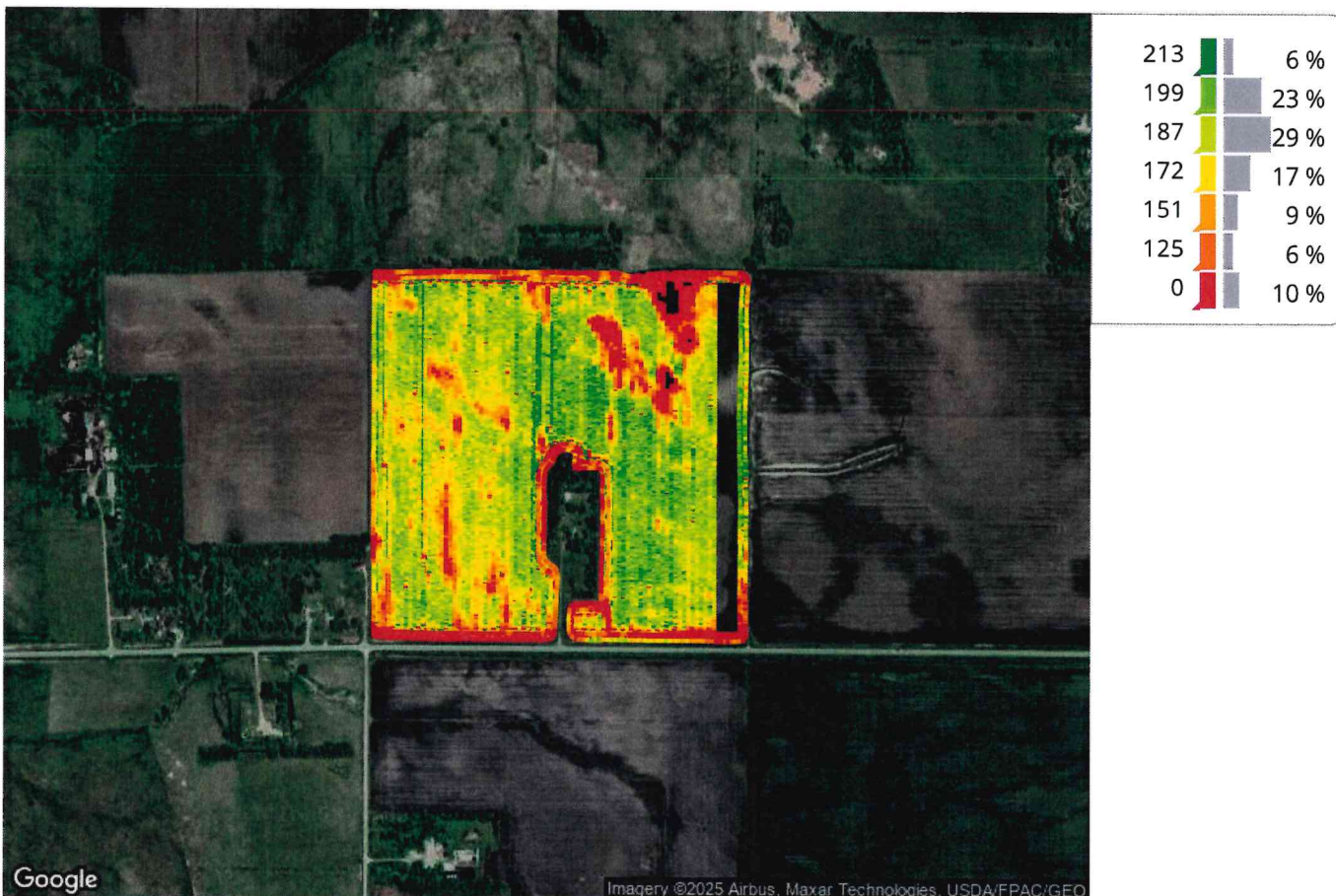
Speed: 4.1 mi/hr

Total Fuel: 188.3 gal

Throughput (Wet): 128,886.8 lb/hr

Fuel Rate (Area): 1.4 gal/ac

### Map: Yield



### Equipment

1H0S680SPC0755298 1H0S680SPC0755298

### Varieties

---

# 2023 Harvest: Soybeans

Field: Bratens

Hovland Farms | Hovland

Start: Oct 12, 2023 10:38 AM

End: Oct 12, 2023 9:24 PM



## Work Totals

Area Harvested: 144 ac

Total Yield: 5,436 bu

Wet Weight: 2,267.4 lb/ac

Elevation: 1,071.8 ft

Yield: 38 bu/ac

Moisture: 12.5 %

Total Wet Weight: 326,519 lb

## Performance

Harvest Time: 8 hr 19 min

Productivity: 17.3 ac/hr

Throughput (Dry): 647 bu/hr

Fuel Efficiency: 36.1 bu/gal

Fuel Rate (Time): 17.9 gal/hr

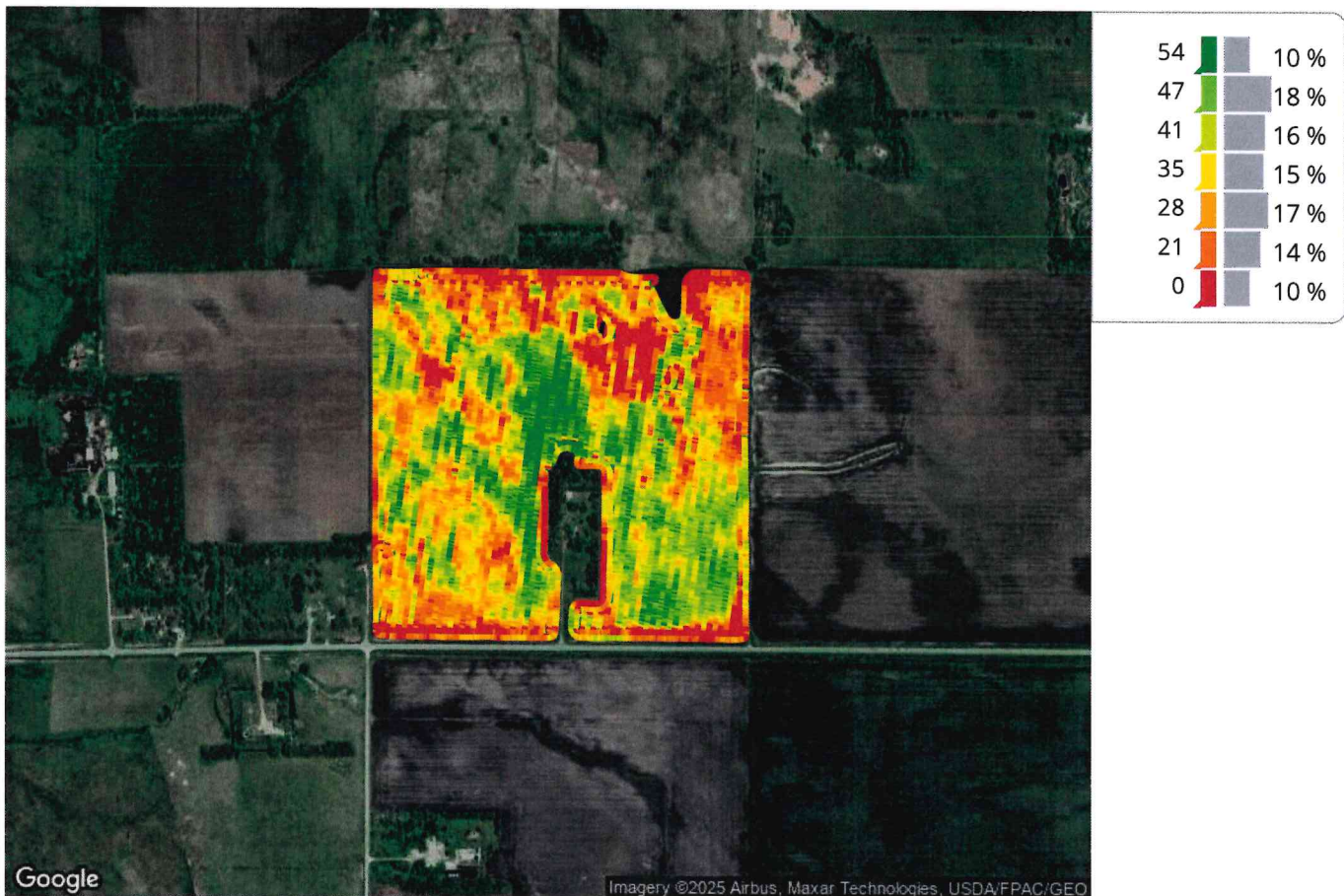
Speed: 3.8 mi/hr

Total Fuel: 149 gal

Throughput (Wet): 38,864.4 lb/hr

Fuel Rate (Area): 1 gal/ac

## Map: Yield



## Equipment

1H0S680SPC0755298 1H0S680SPC0755298

## Varieties

---



# 2022 Harvest: Corn

Field: Bratens

Hovland Farms | Hovland

Start: Nov 7, 2022 7:08 AM

End: Nov 8, 2022 11:34 AM



## Work Totals

Area Harvested: 142.8 ac

Total Yield: 26,475 bu

Wet Weight: 10,383.5 lb/ac

Elevation: 1,071.7 ft

Yield: 185 bu/ac

Moisture: 13.8 %

Total Wet Weight: 1,482,512 lb

## Performance

Harvest Time: 11 hr 56 min

Productivity: 12 ac/hr

Throughput (Dry): 2,217 bu/hr

Fuel Efficiency: 111.2 bu/gal

Fuel Rate (Time): 19.9 gal/hr

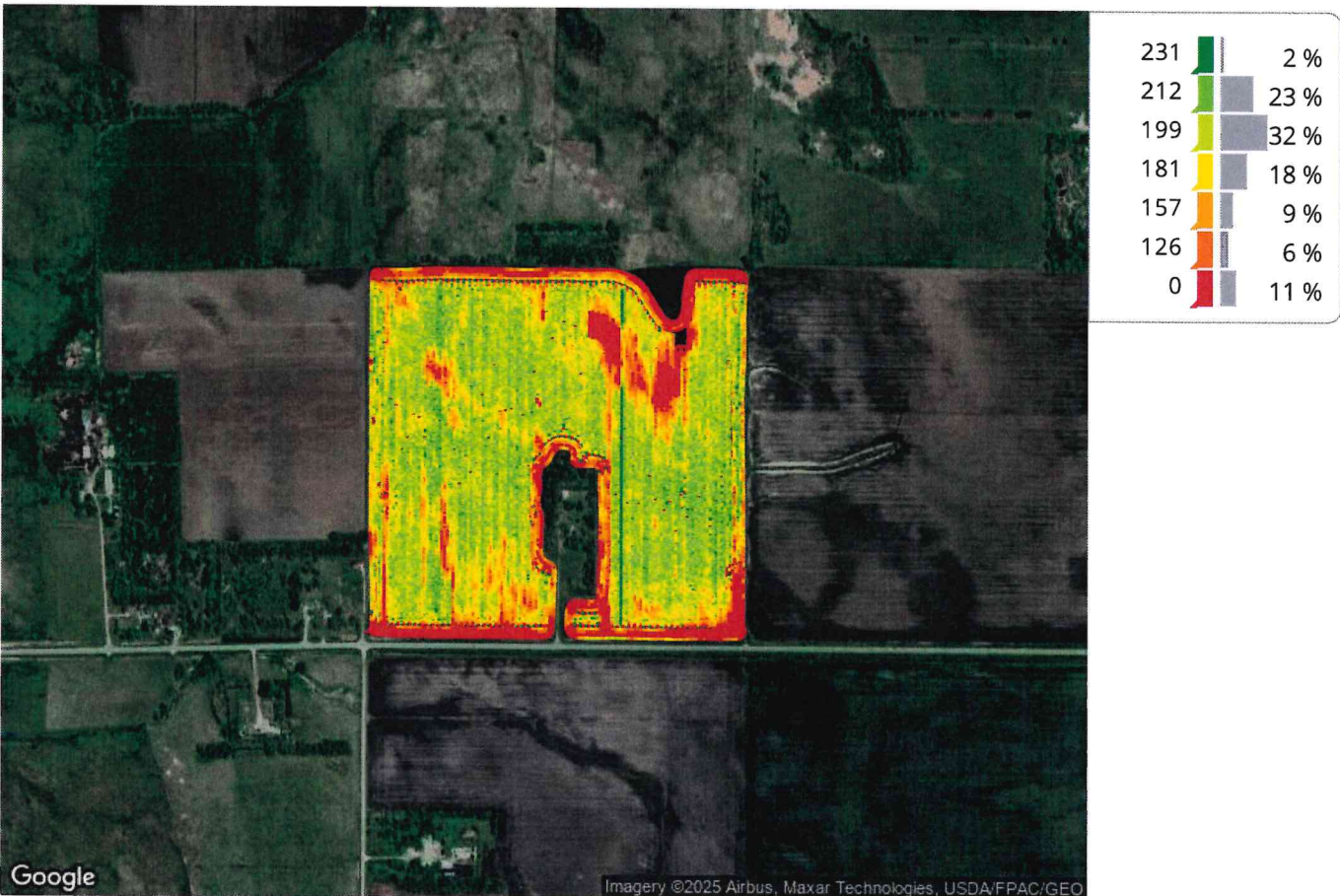
Speed: 5.1 mi/hr

Total Fuel: 238 gal

Throughput (Wet): 124,147.4 lb/hr

Fuel Rate (Area): 1.7 gal/ac

## Map: Yield



## Equipment

1H0S680SPC0755298 1H0S680SPC0755298

## Varieties

123